

# San Diego Sheriff's Department SHO Enforcement Data Summary of Findings

Spring 2014



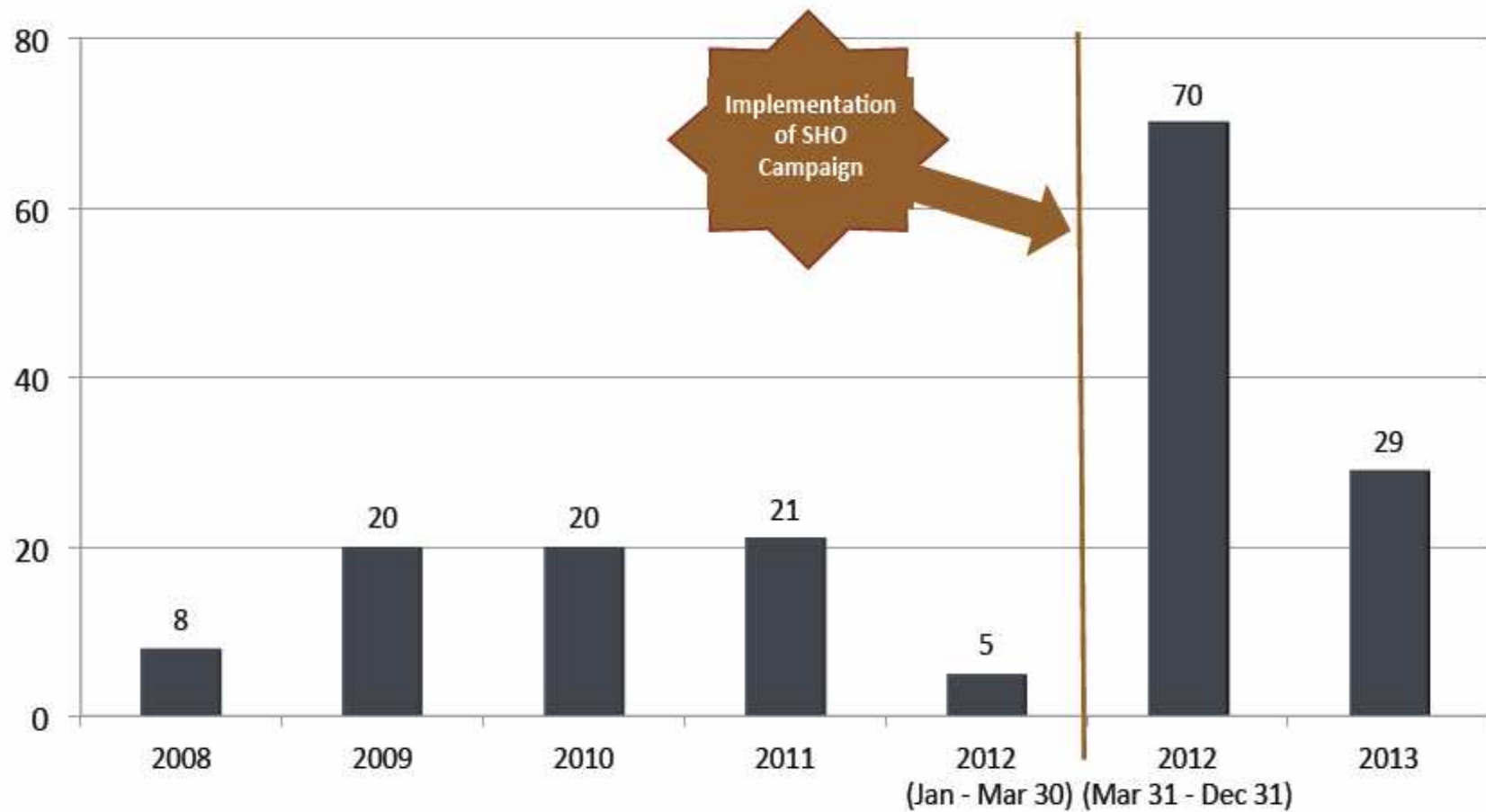
*Funded by the County of San Diego, Health and Human Services, Behavioral Health Services.*

## Overall Sheriff's Department SHO Enforcement 2008 - 2013

Ordinance (Code)	Number of Arrests/Citations
County SHO (32.303)	90
Vista SHO (9.32.040)	41
Encinitas SHO (9.42.050)	12
Poway SHO (9.54.060)	11
San Marcos SHO (10.11.040)	8
Santee SHO (9.72.050)	7
Imperial Beach (9.54.030)	4
<b>Total</b>	<b>173</b>

# Sheriff's Department SHO Enforcement by Year

➤ SHO citations/arrests between 2008 & 2013



# Age of SHO Violators (N=173)

- Overall, 50% were under 21 years old (i.e., minors)

	2008 (Jan-Dec)	2009 (Jan-Dec)	2010 (Jan-Dec)	2011 (Jan-Dec)	2012 (Jan-Dec)	2013 (Jan-Dec)	Overall
% who were under 21	63%	35%	65%	33%	52%	52%	50%
% ages 21-25	12%	40%	5%	33%	31%	27%	22%
% ages 26 and older	25%	25%	30%	34%	17%	21%	28%

# Gender of SHO Violators (N=173)

- Overall, 2/3 of those cited/arrested were male

	2008 (Jan-Dec)	2009 (Jan-Dec)	2010 (Jan-Dec)	2011 (Jan-Dec)	2012 (Jan-Dec)	2013 (Jan-Dec)	Overall
% Male hosts	75%	85%	65%	62%	64%	69%	68%
% Female hosts	25%	15%	35%	38%	36%	31%	32%

## 2011-2013 Qualitative Data Aggregated Key Findings

- ❖ Party Characteristics
  - ❖ Violator Demographics
    - ❖ Injury and Severe Intoxication

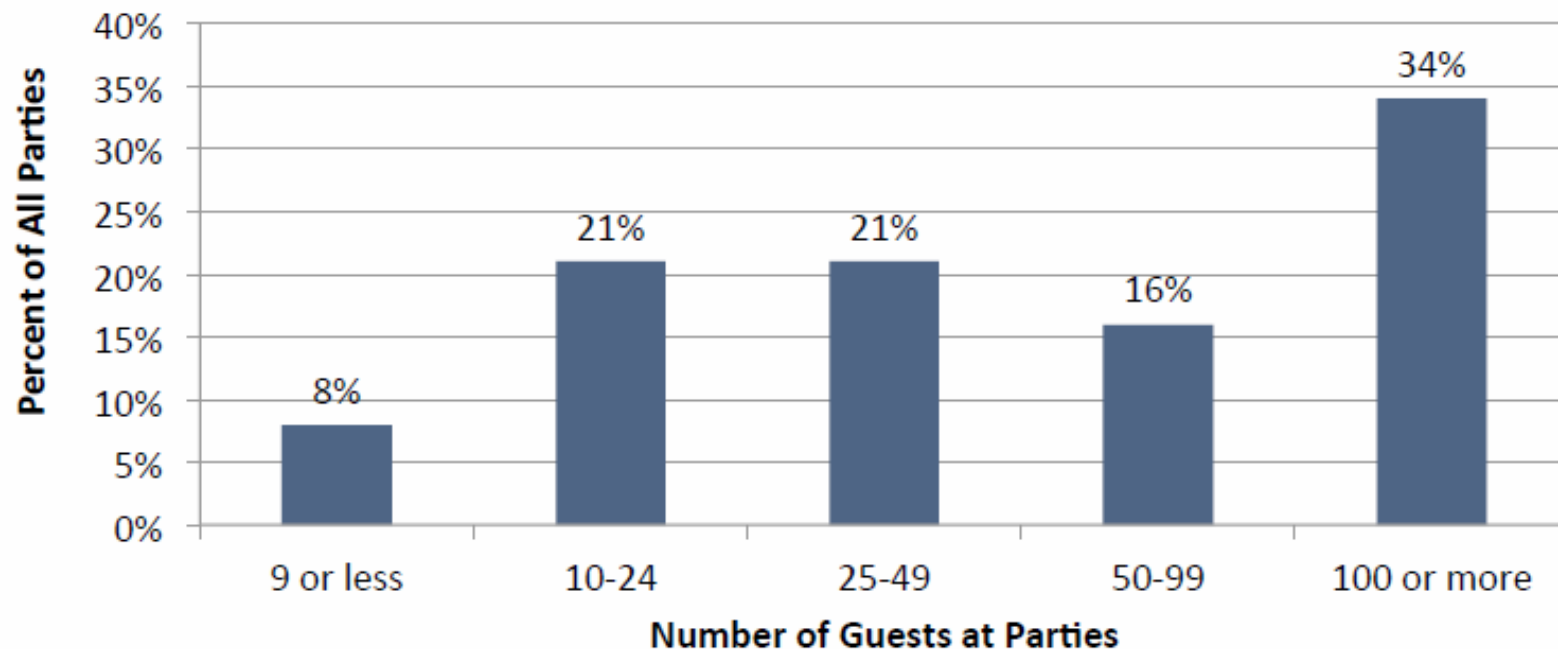
- January 2011 – December 2013
- A total of 92 SHO cases reviewed

# Overall...

- Most parties occurred on Fridays (35%) or Saturdays (33%)
- Nearly all (93%) involved a disturbance complaint
- Nearly all (92%) occurred at a private residence

# Size of SHO Parties (N=86)

- Range of party size = 5 to 300+
- Average number of guests per party = 75
- Most frequently occurring party size = 100 (n=14)
- Half (50%) had 49 or fewer "guests"
- Half (50%) had more than 50 "guests"
- One-third (34%) had more than 100 "guests"

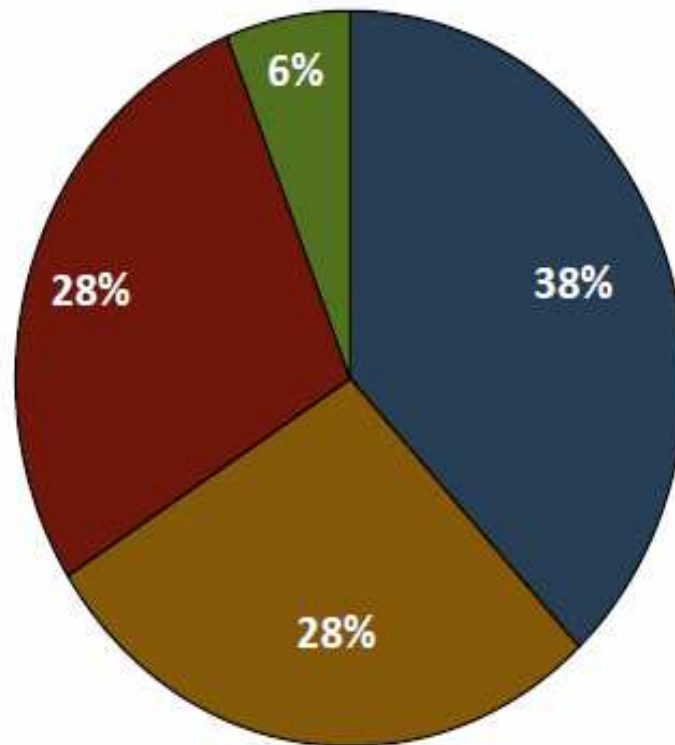




# Who are SHO Party Hosts ?

- More than half of the 92 parties were “hosted” by minors (55%)
  - ❖ 2/3 of parties hosted by minors occurred while parents were not home or out of town (67%)
  - ❖ Parents were home during the party at 17 of the events where underage drinking occurred (33%)
- Young adults (ages 21-25) hosted nearly 1/3 of parties (28%)
- Parents or other adults hosted 17%
- Minors comprised the *majority* of guests at most parties

## Host Characteristics of 100+ Person Parties (N=29)



- Hosted by Person Under 21
- Hosted by Parent (for minor child)
- Hosted by Young Adult (21-25)
- Hosted by Adult Over 25; Not a Parent

# Severe Intoxication and Injury

- ▣ **INCIDENTS:** Deputies documented severe intoxication and/or injury events at 47 of the 92 parties (51%)
  
- ▣ **Severe Intoxication (SI) = 68 Guests**
  - ❖ Definition: Officer observed/documentated a guest who, as a result of alcohol consumption, is unconscious, vomiting, unable to stand/walk, requires paramedic intervention or hospitalization, **or** was cited for public drunkenness or DUI as they were trying to drive away from the party
  
  - ❖ Notably, the 68 SI cases described here **only** include those persons who met the above criteria **and** to whom deputies provided assistance
  
- ▣ **Injury = 16 Guests**
  - ❖ Definition: Physical injury sustained as a result of alcohol consumption or attending the SHO-related party (i.e., involved in a fight, assault victim, injury from falling, car crash, etc.)

# Severe Intoxication (N=68 guests)

- Deputies documented 68 severely intoxicated persons at 47 parties
- 91% of severely intoxicated guests were minors
- 100% of severely intoxicated guests who required medical attention were minors


Incidents Involving a Minor		Incidents with Minors Requiring Medical Intervention	
N	%	N	%
62	91%	23	37%

# Injury (N=16 guests)

- Deputies documented 16 injured persons at 47 parties
- 50% of injured guests were minors
- 7 of the injured guests were transported to the hospital (44%)

Injury Incidents Involving a Minor		Injury Incidents with Minor Requiring Medical Intervention	
N	%	N	%
8	50%	5	63%

# Evidence of Drug Use

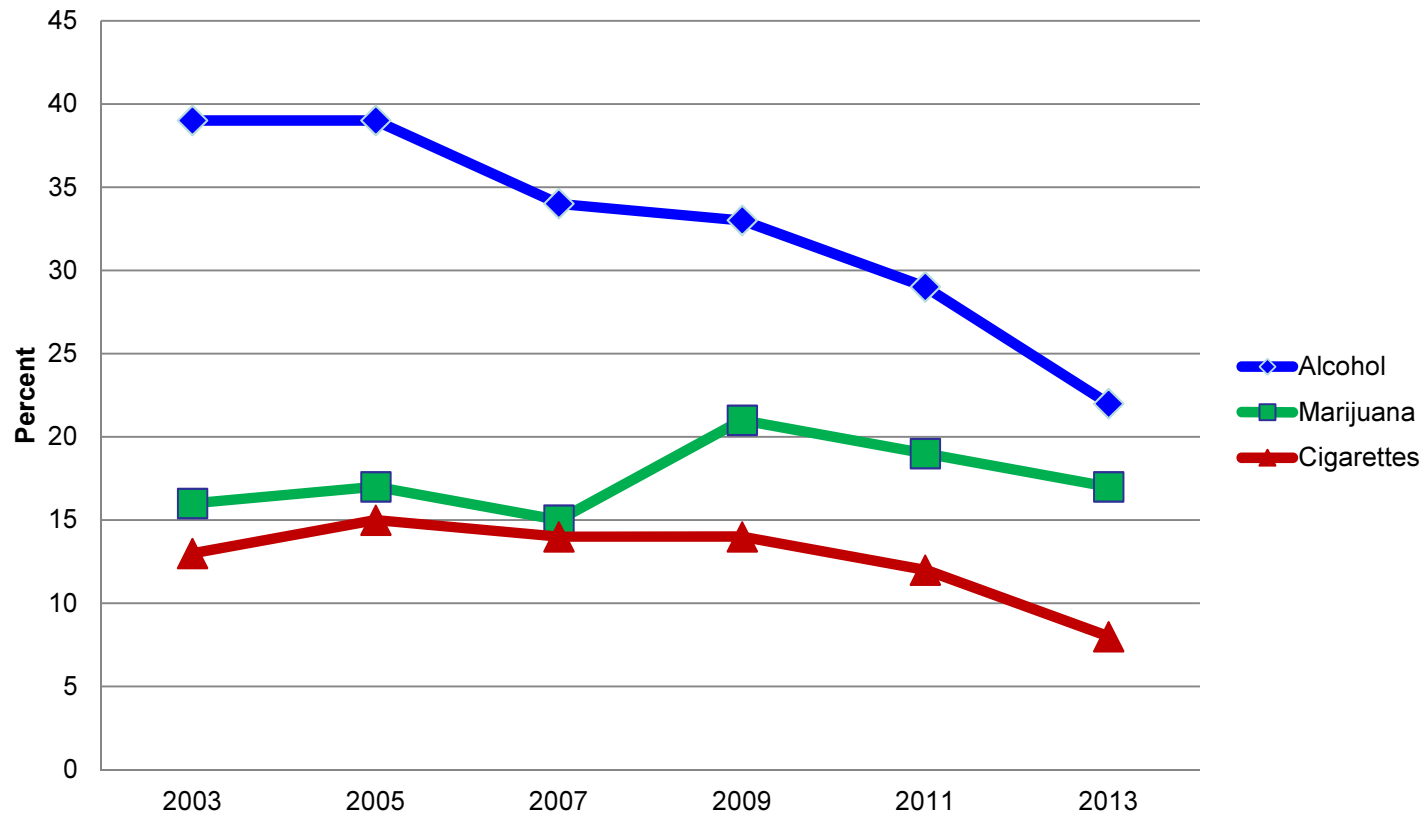
- Marijuana use was noted at 1 of every 3 parties (32%) in 2013; up from 1 in 5 (20%) in 2011 - 2012:
    - ❖ Deputies smelled and/or observed marijuana and/or paraphernalia, or confiscated plants
    - ❖ At 2 separate parties in 2013, the same 18 year-old male found with pot said he had an active medical marijuana card
    - ❖ At 1 party in 2013, deputies determined that 9 very intoxicated minors were under the influence of both marijuana and alcohol
  
  - Lastly, two arrests were made related to marijuana in 2013:
    - ❖ Contributing to the delinquency of a minor
    - ❖ Willful cruelty to a child/child neglect
- 

## Key Take-Aways: Minors and SHO Parties

- ▣ Minors hosted half of all SHO-related parties
  - ➔ 2/3 of those parties occurred when parents were out of town
- ▣ One-third (34%) of parties had 100 or more “guests”
- ▣ Minors hosted 38% of parties with 100+ guests
  - ➔ *But*, parents hosted nearly 1/3 of 100+ person parties for their underage children
- ▣ Severe intoxication and/or injury events occurred at just over half of all parties
  - ➔ 100% of the severely intoxicated guests requiring medical intervention and/or hospitalization were minors

# Trends in Student Substance Use

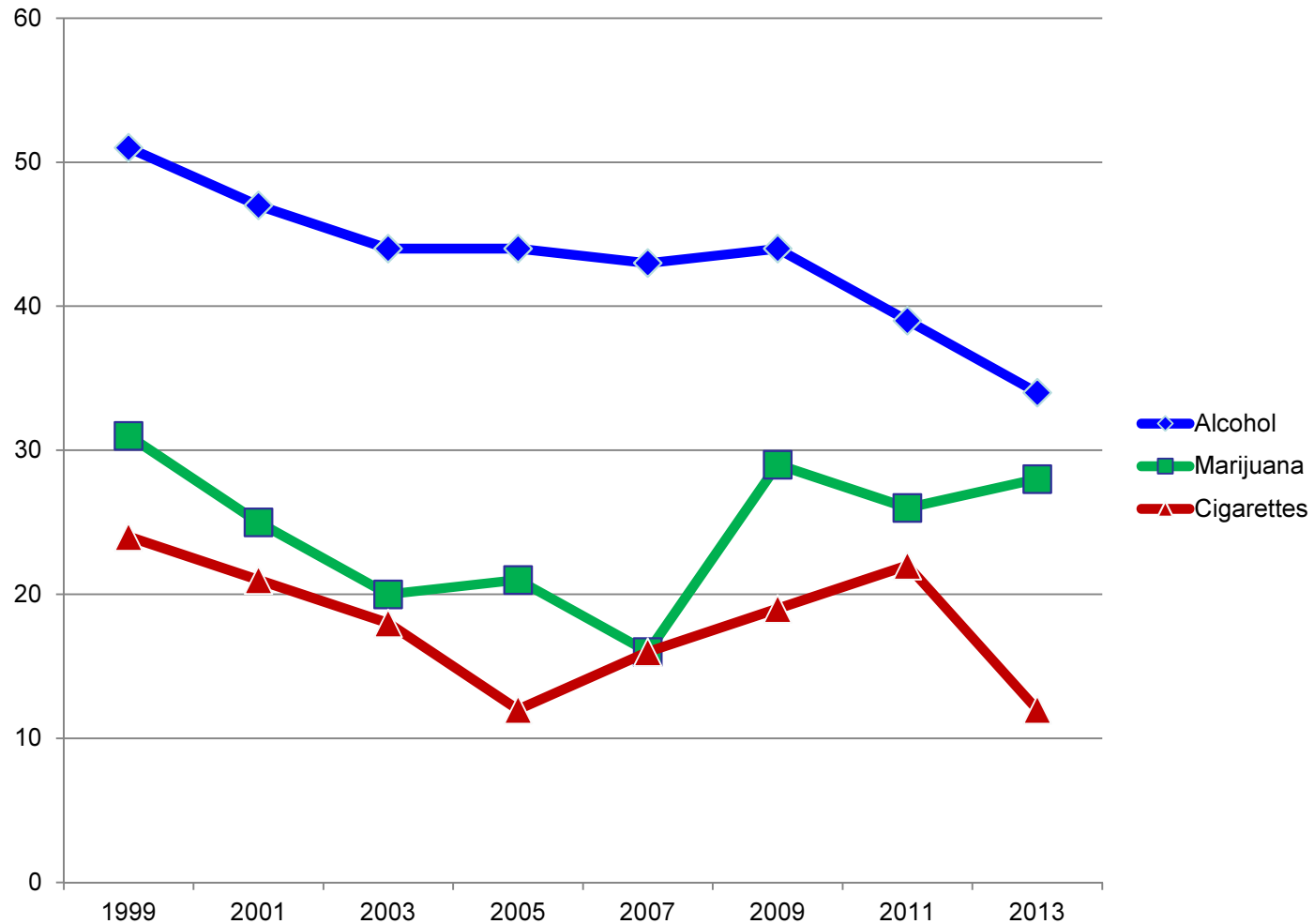
Past 30-Day Use by 11th Graders (Vista Unified School District)



*California Healthy Kids Survey (CHKS)*

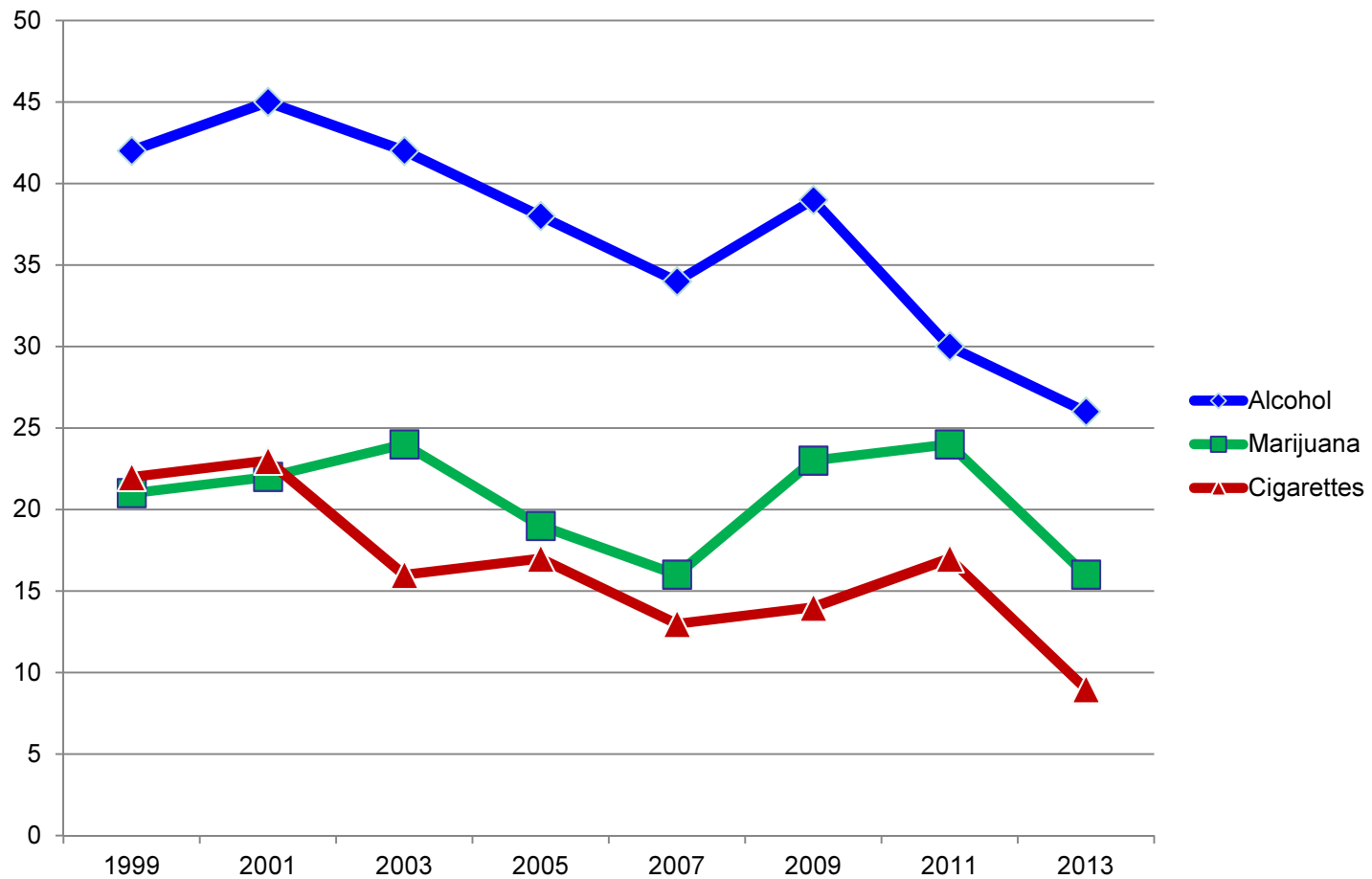


# Carlsbad Unified



*California Healthy Kids Survey (CHKS); past 30-day use by 11<sup>th</sup> graders*

# Oceanside Unified



*California Healthy Kids Survey (CHKS); past 30-day use by 11<sup>th</sup> graders*